

iPhone App

Voice Control Alarm Clock

# KEI 2010

User Manual Ver.1.0

# Index

## Description

1. Characteristics	02
2. Function	02

## Languages

1. Setting of languages	03
-------------------------	----

## Voice Commands

1. Calling the KEI 2010	04
2. Voice commands table	05
3. Talking rule about the time	05
4. Conversation samples by scene	06
4-1. calling of the present time	06
4-2. calling of the date	06
4-3. calling of the set alarm time and alarm on	06
4-4. setting of the alarm time and alarm on	07
4-5. setting of the alarm sound	07
4-6. alarm off	07
4-7. confirmation of voice commands	08
4-8. others	08

## Alarm

1. Setting by talking	09
2. Setting by manual mode	09
3. How to stop the alarm sound	09

## Details

10

## Support

1. Precautions about the recognition of voice	11
2. Precautions about the applications	11
3. For inquiry	11

# Description

KEI 2010 is an alarm clock controlled by voice.

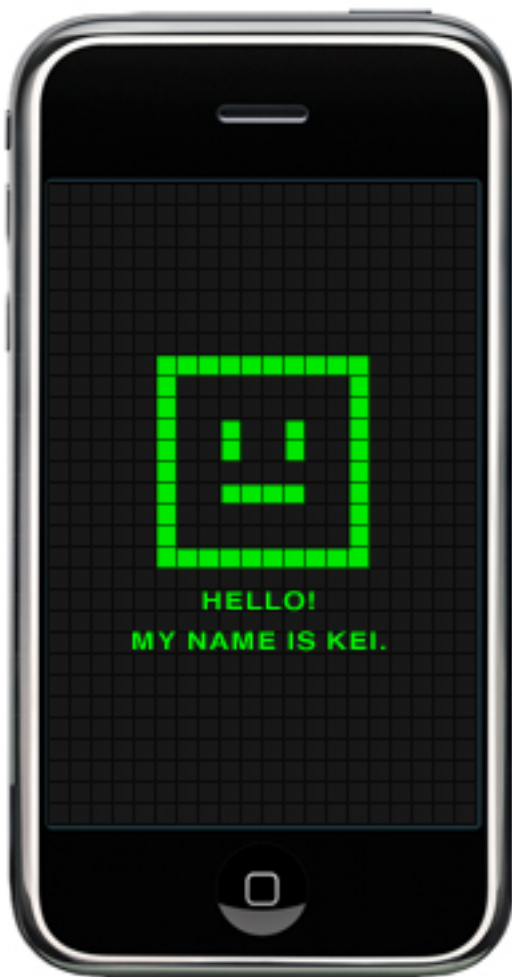
No touch operation is necessary other than the start up operation.

The conversation can control.

Please try to call 「Hello! KEI」.

## 1. Characteristics

- Control by the “voice(voice command)trigger” and the conversation type interface.
- Voice recognition technology 「**AmiVoice®**」, developed by Advanced-Media Limited, is adopted as the voice recognition technology.



## 2. Functions

- Languages in talking: Japanese, English
- Navigation voice and letter display : Japanese, English
- Screen effect on voice catch  
(back screen colour changes to green)
- Call back function when voice recognition is impossible ( icon shows “ ? ” )
- Alarm function (sound: 3 types)
- Date display
- How to call the set screen by manual mode  
(double tapping on the screen)
- How to stop the alarm sound (tapping on the screen)

# Languages

Please set the language by the setting screen before using KEI 2010.

English is used in every initial setting.

## 1. Setting of the language

1. Start KEI 2010, then show the setting screen by double tapping on the screen after the clock displays.
2. Set "Languages" on the setting screen.



Setting screen

### Kei 2010 Voice

You can set the voice (navigation voice) in this area.  
You can select Japanese or English for voice and letter display

### Voice Command

You can set the talking language in this area  
You can select Japanese or English for voice recognition

3. Push「Done」button after various "Languages" setting, then setting is complete.

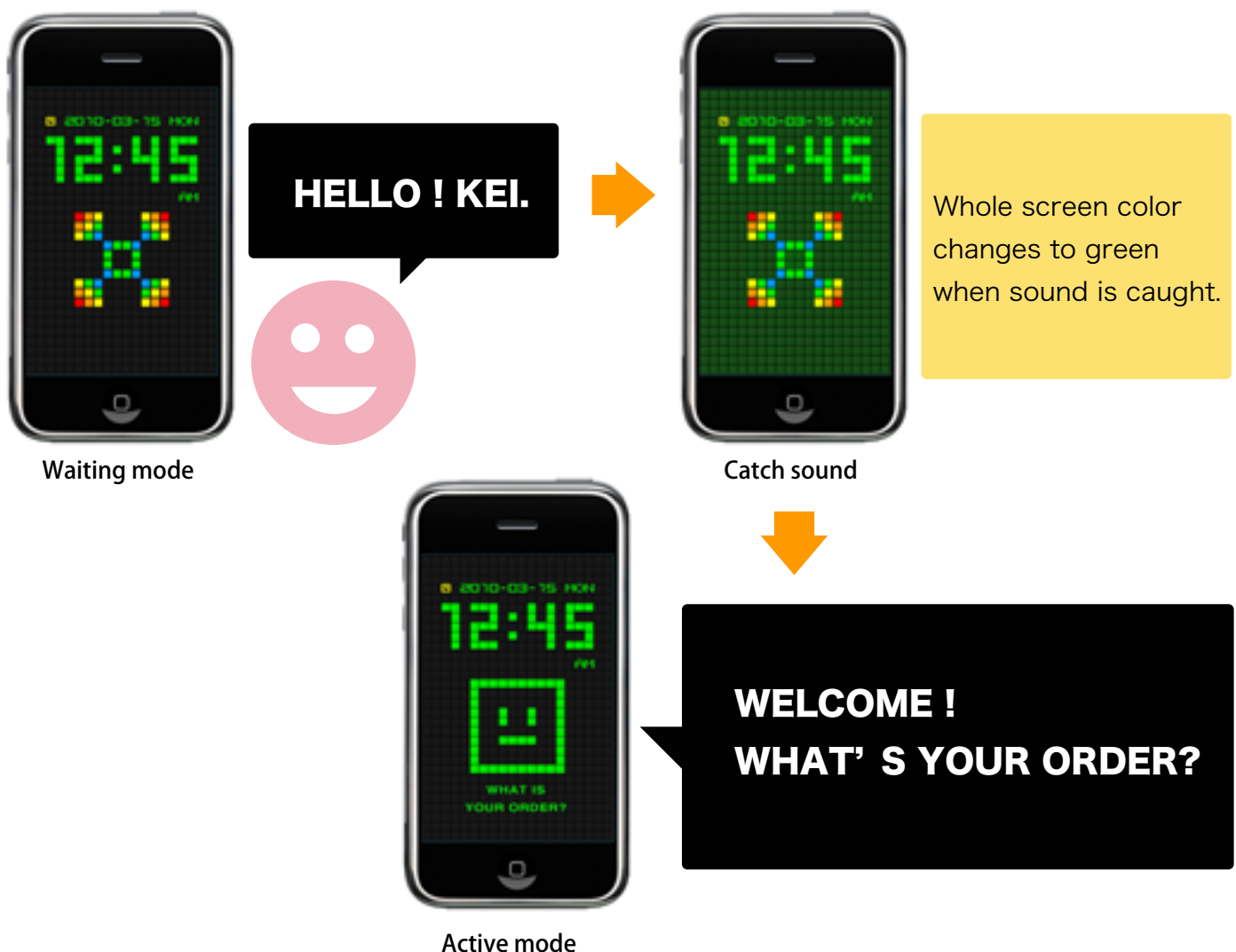
# Voice Commands

This explains the voice command operating in KEI 2010.

## 1. Call KEI 2010

1. Talk "HELLO! KEI" on the waiting mode
2. KEI 2010 turns into active mode when the voice is recognized, and it answers back with "WELCOME ! WHAT IS YOUR ORDER? ".

Then voice command becomes effective as is explained in next section (page 5).



KEI 2010 changes the whole screen color to green when sound is caught.

Your voice does not reach in such case as the back screen is not bright green in spite of your talking.

Please talk close to KEI 2010 or in loud voice.

# Voice Commands

## 2. Voice Command table

English	Japanese	explanation
<b>TIME</b>	<b>タイム</b>	calling of the present time
<b>TODAY'S DATE</b>	<b>トゥデイズデイト</b>	calling of the date
<b>ALARM</b>	<b>アラーム</b>	calling the set alarm time and alarm on
<b>SET ALARM</b>	<b>セットアラーム</b>	setting the alarm time and alarm on
<b>ALARM SOUND</b>	<b>アラームサウンド</b>	setting the alarm sound (3 types) and alarm on
<b>ALARM OFF</b>	<b>アラームオフ</b>	alarm off
<b>HELP</b>	<b>ヘルプ</b>	confirmation of the voice commands
<b>RESET</b>	<b>リセット</b>	return to the beginning

## 3. Talking rules for time

Examples)

- **7:45 a.m.** (Seven forty five a. m.)
- **6:00 p.m.** (Six O'clock p. m.)
- **6:01 p.m.** (Six Oh One p. m.)

※Talk in the selected language in "Setting 'Voice Command' " (cf. Page 03)

※ In case that English is selected in "Setting 'Voice Command' " (cf. Page 03)

As for the similar pronunciation such as '15(fifteen) ' and '50(fifty) ',

KEI 2010 asks in return " one five or five zero? ".

Please talk 'one five( in case of 15)' in such a case.




KEI 2010 changes the whole screen color to green when sound is caught.

Your voice does not reach in such case as the back screen is not bright green in spite of your talking.

Please talk close to KEI 2010 ,or in loud voice.

# Voice Commands

## 4. Conversation samples by scene

 **User**  Voice of Kei 2010(navigation voice)

### 【4-1. Calling of the present time】

 **HELLO ! KEI.**

 WELCOME ! WHAT'S YOUR ORDER ?

 **TIME**

 THE TIME IS 2:27 PM.



Kei 2010 returns to the waiting mode in a few minutes after the command completes.  
Kei 2010 also returns to the waiting mode when time passes without sensing "voice" even during conversation.  
This state is similarly seen in any following scene.

### 【4-2. Calling of the date】

 **HELLO ! KEI.**

 WELCOME ! WHAT'S YOUR ORDER ?

 **TODAY'S DATE**

 TODAY'S DATE IS MONDAY, 15 MARCH, 2010.

### 【4-3. Calling of the set alarm time and alarm on】

 **HELLO ! KEI.**

 WELCOME ! WHAT'S YOUR ORDER ?

 **ALARM**

 THE ALARM SETTING IS 6:30 AM.

THE ALARM SOUND IS ALARM 1.

\*The set alarm sound sample is ringing.

Alarm can be set by the manual mode.  
Please set from setting screen by double tapping on the screen  
(see. page 09)



KEI 2010 changes the whole screen color to green when sound is caught.  
Your voice does not reach in such case as the back screen is not bright green in spite of your talking.  
Please talk close to KEI 2010, or in loud voice.

# Voice Commands


 **User**  Voice of Kei 2010(navigation voice)

## 【4-4. Setting of alarm time and alarm on】

 **HELLO ! KEI.**

 WELCOME ! WHAT'S YOUR ORDER ?

 **SET ALARM**

 THE ALARM SETTING IS 6:30 AM.  
PLEASE TALK.

 **8:30 AM.**

 THE NEW ALARM SETTING IS 8:30 AM.


Alarm can be set by the manual mode.  
Please set from setting screen by double tapping on the screen  
(see. page 09)

## 【4-5. Setting of the alarm sound and alarm on】 (3 types)

 **HELLO ! KEI.**

 WELCOME ! WHAT'S YOUR ORDER ?

 **ALARM SOUND**

 THE REGISTERED ALARM SOUND IS  
ALARM 1 \*alarm sound sample rings  
ALARM 2 \*alarm sound sample rings  
ALARM 3 \*alarm sound sample rings

 **ALARM 3**

 THE NEW ALARM SOUND IS ALARM 3.

## 【4-6. Alarm off】

 **HELLO ! KEI.**

 WELCOME ! WHAT'S YOUR ORDER ?

 **ALARM OFF**

 ALARM IS NOW OFF.



KEI 2010 changes the whole screen color to green when sound is caught.

Your voice does not reach in such case as the back screen is not bright green in spite of your talking.

Please talk close to KEI 2010, in loud voice.



# Voice Commands

☺ **User**    📱 Voice of Kei 2010(navigation voice)

## 【4-7. Confirmation of voice commands】

☺ **HELLO ! KEI.**

📱 WELCOME ! WHAT'S YOUR ORDER ?

☺ **HELP**

📱 HERE ARE THE VOICE COMMANDS.

Time

Today's Date

Alarm

Set Alarm

Alarm Sound

Alarm Off

Help

Reset

## 【4-8. Others】

### When you can' t hear

📱 " ? " Icon and beep sound \*Please talk again in this screen.

### When you stop during operation

☺ **RESET**

📱 WELCOME ! WHAT'S YOUR ORDER ? \*Return to the beginning.



"?" Icon



KEI 2010 changes the whole screen color to green when sound is caught.

Your voice does not reach in such case as the back screen is not bright green in spite of your talking.

Please talk close to KEI 2010, or in loud voice P.9

# Alarm

How to set the alarm.

## 1. Setting by talking

1. These voice commands set the alarm function "ON". (see p06~07)

- **ALARM**
- **SET ALARM**
- **ALARM SOUND**

2. This voice commands set the alarm function "OFF". (see p07)

- **ALARM OFF**

## 2. Setting by manual mode

1. Start KEI 2010. Display the setting screen by double tapping on screen after the clock appears.



2. Tap "Alarm Settings" and finish any setting on the dial menu.

3. As for the "off/on" on lower area, if color changes to blue "on" tapping, alarm function is ON. If color changes to blue on "off" tapping, alarm function is OFF.

4. Return to the previous screen after setting is completed. Push 「Done」 button, then the setting is finished.

## 3. How to stop the alarm sound

You can stop easily by the screen tapping when alarm sounds at the set time.



Only one Alarm time can be set by manual mode

Alarm time set by "set alarm" command resets the alarm time set before or alarm time set by manual mode.

# Details

## Usual screen

### Alarm icon

Display on alarm setting

### Screen control

Tap stop the alarm sound

Double tap Change to the setting display

### Letter display area

Japanese/English

### Date display

### Time display

### KEI2010

waiting mode : geometric pattern graphics  
active mode : character display

### Back color

usual : black  
On voice catch : green

## Setting screen

### Setting of Kei2010 voice (navigation voice)

### Setting of talking language

Japanese/English

### setting completion button

### Manual alarm setting

### Voice command list

### Support site link button

# Support

For your comfortable use of KEI2010.

## 1. Precaution about the voice recognition

- Surrounding voice such as TV sound may recognize voice, leading to improper operation.
- Don't cover the microphone when you talk (there is microphone on the lower area of iPhone)
- Confirm the microphone in open state if you use stand.
- When background is not bright green even during talking, the voice doesn't reach
- when the background color changes from green to black during talking, please talk without pause, and in one breath. Talk, not along with rule of talking, can't be recognized.
- Please confirm the acceptable voice command if no response is seen even by talking many times
- Don't change the distance between the mouth and the microphone in talking if possible.
- Talking in excessive punctuation such as "A-LAR-M" worsens the accuracy of recognition.
- Be careful not to talk so fast.

## 2. Precaution on the application

- Time display refers to the iPhone clock.  
Summer time and others follows the specification of main body of the iPhone.
- Alarm does not ring when no application starts or iPhone sleeps.
- Use the power adapter for the long time use.

## 3. For inquiry

- Support site (Studio Heat Lab.)  
[http://lab.studioheat.com/?page\\_id=351](http://lab.studioheat.com/?page_id=351)